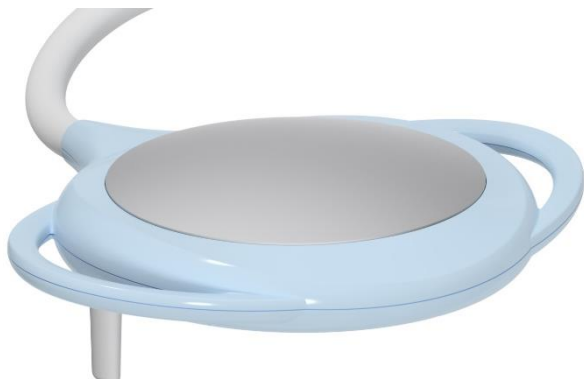
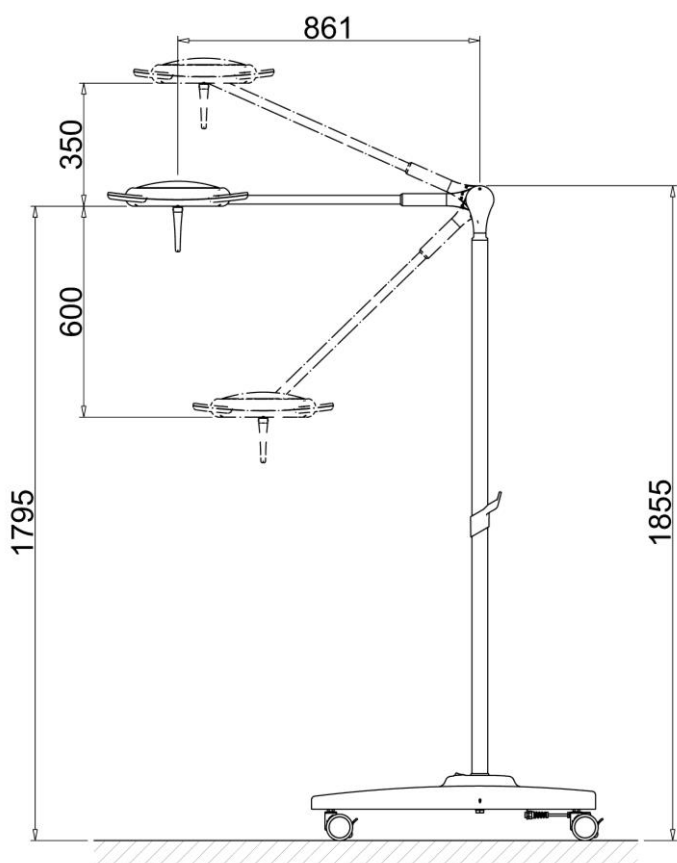


**SLIM**

**TECHNICAL PROPERTIES**


Performance	
	<b>Slim</b>
Light intensity (Ec)	100klx
Colour temperature (K)	4500
Colour rendering index (CRI)	96
Light source	n°12 Led
Focus	Fissa
Light field depth (60%)	85 cm
Light field diameter d <sub>10</sub>	16 cm
Irradiated energy	414 W/m <sup>2</sup>
Electrical Data	
Primary voltage (Vac)	100÷240 V
Secondary voltage (Vdc)	24 V
Frequency	50/60 Hz
Power consumption	40 VA

**SLIM mobile model**

 <b>TECNO-GAZ</b>	<b>SLIM lamp</b> <b>MOBILE version</b>	EN	07 June 2022
		Rev.2	Page 2 / 3

## - CORRECTLY WIRING UP THE PREMISES

The premises used for medical purposes must be safely wired up in a workmanlike manner by qualified personnel.

Qualified personnel include but are not restricted to the following professional figures:

Electrical Engineer Electro-technical expert qualified to work as an electrician.

The wiring system of the environment (premises) in which installation is made must be in conformity with CEI 64-8 standards (IT regulations for premises used for medical purposes) and with applicable national laws and/or regulations.

The electrical system must be certified by an electrician qualified to issue the certificate of conformity.

The earth system must be certified as required by applicable regulations.

The electrical system must envisage laying cables suitable to the electrical characteristics of the Product to be supplied.

The electrical system must feature a protection fuse or thermal magnetic disconnection switch upstream of the Product, to avoid the risk of its being damaged following faults and/or malfunctions of the power mains.

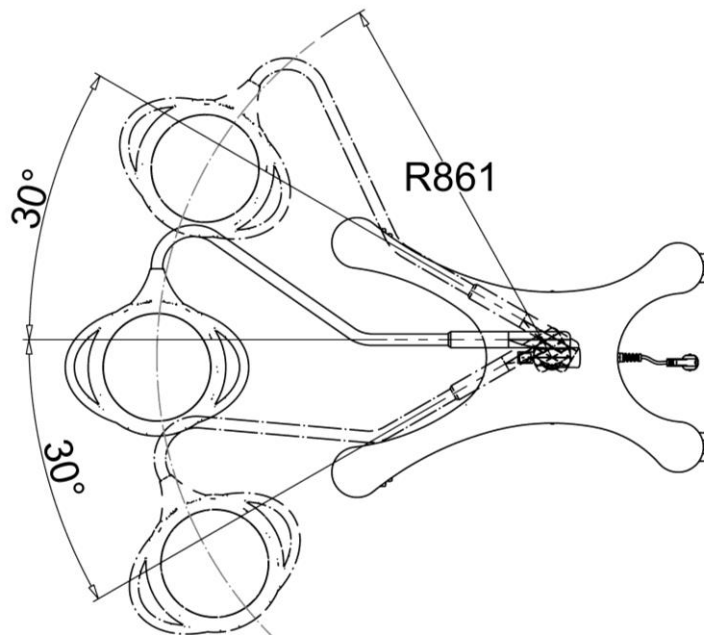
## CONFORMITY DECLARATION

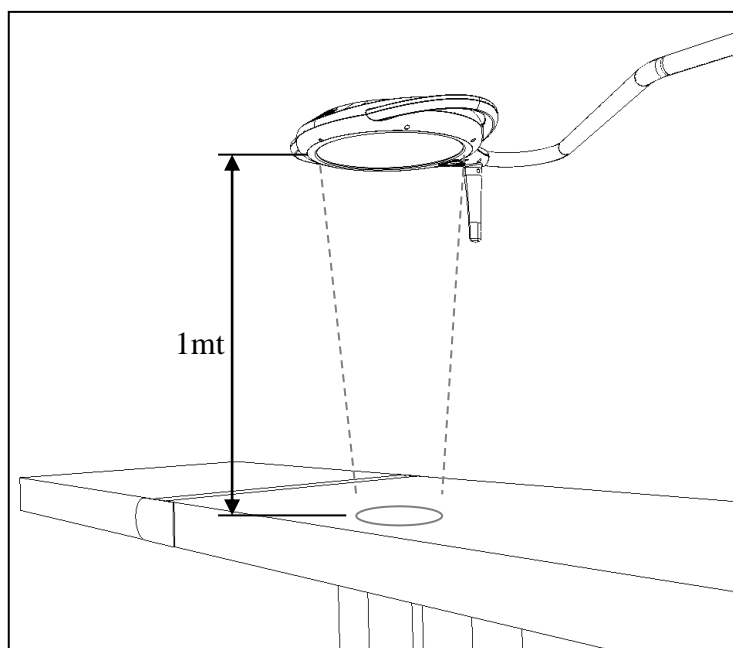
On the basis of the above points, we certify that the preparation of the electrical system have been carried out safely, according to the rule of art.

## IMPORTANT:

**TECNO-GAZ S.p.a. disclaims all liability for any type of fault or damage which might occur over time due to the electrical system installed in the premises not being suitable**

## PRODUCT OPERATING AREA



**WORK DISTANCE**

To have the optimization of light intensity, we recommend using the product at a distance of 1m.

However, the product provides good light intensity even when used at a distance of 70cm to 140cm